

Mura(The Garden in Residence Complex)



Landscape Architect: TGP, Inc.
 Architect: Togawa Smith & Martin Residential
 Location: Los Angeles, California, USA
 Photographer: Greg Epstein
 Completion: 2008

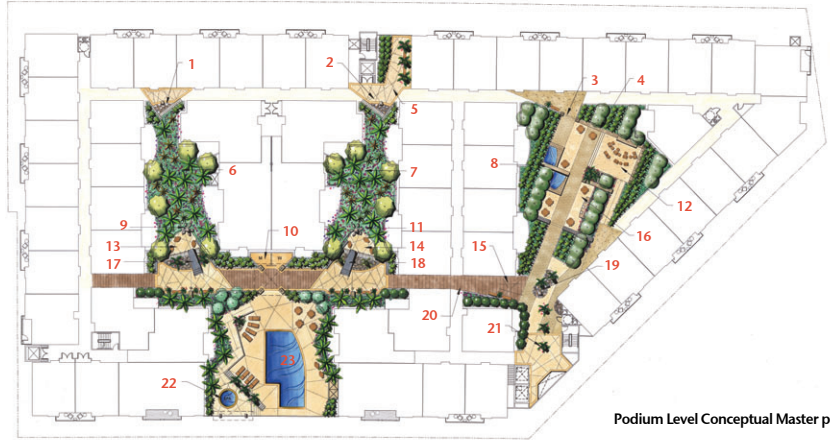
Mura, which means 'little village' in Japanese, is a 190-unit luxury condominium project in downtown Los Angeles, adjacent to Japan town. Despite its proximity to Japan town, the developer reports that 95% of the buyers are Korean, many of them small business owners in the downtown area, or parents that purchased the units for children attending the University of Southern California. Also, a development across the street is comprised of 80% Korean owners.

The 'industrial' context of the project inspired a design palette that included steel bridges, beams and railings, as well as Japanese design elements such as bamboo, stone fountains and walls. The three on-structure courtyards are lushly planted with palm trees, with one courtyard designed as a 'living room' with fireplace and BBQ's and another with a pool and spa.

Text: TGP, Inc. [TGP](#)



▲ The main pedestrian circulation spine at Mura is paved in a richly woven contemporary carpet with interlocking concrete pavers in four colors in a repeating pattern. This promenade ties together three large courtyards and a pool area, all located on the podium level one floor above the street.



Podium Level Conceptual Master plan

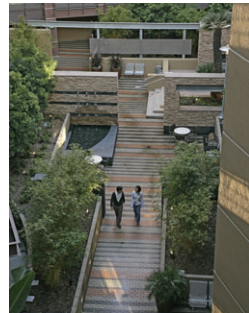
- 1-2. ZEN' Niche_cobble field, stone wall & battered wall
- 3. Steel torii gate
- 4. 'Shoji screens' of wire mesh
- 5. ZEN' lobby_cobblestones, boulders, black slate wall, battered concrete wall, exposed aggregate paving bamboo & 10' FT. HT. cylindrical planters
- 6-7. Lushly planted courtyards
- 8. Double-sided stone faced fountain wall _stainless steel pipes
- 9. Vertical 'natural' stone fountain
- 10. Restrooms_overhead trellis as focal element
- 11. Vertical 'natural' stone fountain
- 12. Raised 'living room'_fireplace & countertop
- 13-14. Upper patio
- 15. Overhead 'chandelier' of steel beams_neon strip lights
- 16. BBQ room countertop & picnic tables
- 17-18. Steel bridge over cobblestone field
- 19. Focal element
- 20. Central promenade_wood textured concrete paving
- 21. 10 FT. HT. cylindrical concrete planters
- 22. Raised spa area_zig zag ramp & steel 'window frame'
- 23. Pool

무라(공동주거단지 내 정원)

일본어로 '작은 마을'을 뜻하는 무라는 재팬 타운 부근 로스앤젤리스 도심의 190채에 달하는 호화 아파트 프로젝트이다. 재팬 타운 부근에 있음에도, 개발자는 구매자의 95%의 한국인이며, 이들 중 대다수는 도심지에서 소규모 업체를 운영하거나 남가주대학을 다니는 자녀를 위해 집을 구매한 부모들이다. 또한, 도로 양쪽으로 개발되는 것은 80%가 한국인 소유이다.

산업적으로 이 프로젝트의 배경을 보자면 대나무, 석재 분수 및 석재 벽같은 일본 디자인 요소뿐만 아니라 강교, 들보 및 난간 등 디자인 팔레트에 영감을 찾았다. 세 곳의 조성 중인 안뜰에 아자수를 무성하게 심었으며, 안뜰 한 곳은 난로와 바비큐가 있는 '거실'로 설계하였고, 다른 한 곳은 수영장과 스파가 있는 곳으로 설계하였다.

글: TGP, Inc.



- ▶ Both entries to the pool area are framed by black slate-clad battered walls that frame the view of the downtown L.A. skyline. A massive galvanized steel trellis cantilevers above the pool deck and extends over the promenade creating an interesting focal point for the promenade.
- ▼ Bands of black slate tiles fitted with stainless steel spouts accent both sides of an architectural-stone veneered wall. The water features provide pleasant ambient background sound for the living room, which is located up the stairs to the left, and for the dining room, in the space beyond. Slate-covered fountain basins at seat height, provide additional sitting opportunities for the two-sided fountain.
- ◀ The promenade at Mura, a luxury condominium complex developed by Pulte Homes, offers residents the opportunity for lengthy strolls within the safe confines of the gated condo community in the Arts District of downtown Los Angeles.





The largest of three podium-level courtyards is comprised of three outdoor rooms: a foyer furnished with benches that shares a double-sided fountain with the adjacent dining room that is fitted out with barbeque grills, granite countertop, tables and chairs; and a living room with a comfortable furnishings around a fireplace.



▲ Landscape lighting for the fountain walls and trees adds drama to the night-time landscape.

◀ The architectural-stone veneered fireplace is the focal point of the comfortably furnished living room, which is floored with wood-textured, recycled-plastic decking. Galvanized steel Ibeams and posts support metal gratings that create a semi-transparent, contemporary backdrop to the outdoor room.

▶ The dining room includes a granite countertop featuring two grills and a sink. A large window in the partition wall (at left) provides residents while dining a view of the fire in the adjacent living room fireplace.





▲ Eight-foot-tall columns of natural stone grace the sitting areas of two planted courtyards at the upper level. Dripping water enhances the rough texture of one and highlights the smooth, twisting surface of the other.



▲ Lush plantings of 18- to 30-foot-tall Fishtail and Queen palms in the two large courtyards provide the surrounding units with a landscape view as well as privacy.

► The steel trellis visually dominates the pool and spa deck, which enjoys full sun all day.

▼ Bathers in the spa can enjoy the dramatic night view of the downtown skyline through the glass slot window in the parapet wall.

